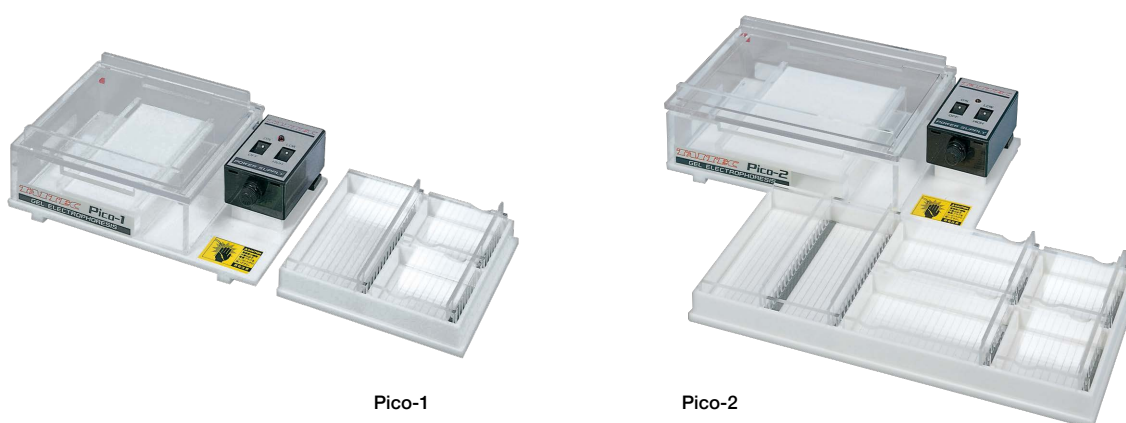


# Submarine Electrophoresis apparatus Pico-1/Pico-2

*For Agarose mini gel with power supply. Pico-1 can make two gel sizes while Pico-2 can make three gel sizes. Gel trays are Thick, Durable, and UV transparent.*



Pico-1

Pico-2

## Features

- 8/15 wells in Pico-1 and 8/18/32 wells in Pico-2
- Electrophoresis voltage is switchable between High/Low

**The thickness of the Gel tray and Gel preparation bath is 5 mm for reducing Thermal deformation.**

The thickness is doubled compared to the conventional one. Even if the hot gel solution is poured into it, the risk of deformation due to heat is reduced.

## Applications

- Agarose gel Electrophoresis of DNA and RNA

### For Agarose gel

Mini and Middle-sized Submarine electrophoresis apparatus.

### Comes with multiple sizes of Gel Trays

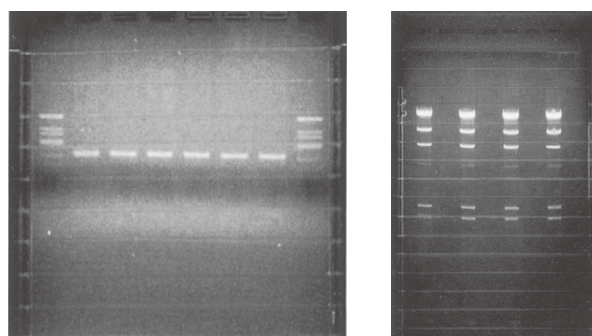
Pico-1 can make three different gel sizes while Pico-2 can make five different gel sizes.

## Verification on Electrophoresis using a UV Permeable Gel tray

The gel on tray as placed on the UV transilluminator. It was photographed after electrophoresis of DNA fragment (325 bp) and amplified with PCR by 2% agarose gel (EtBr included) for 25 minutes at 100 V with Pico-1 (right figure).

The gel on whole tray was photographed after electrophoresis of  $\lambda$  DNA and cut by HindIII with 1% agarose gel at 100 V for 1.5 h with Pico-2. Because the trays in the Pico series did not absorb the UV light, the scale lines slightly reflected. The gel can be placed on the UV transilluminator as it is and confirmation during electrophoresis was also easy.

Multiple sizes of Gel Trays come as set and can be widely applied to fractionation of genomic DNA such as Southern blotting from confirmation of PCR products.



Model	Pico-1	Pico-2
Size of Gels/Number that is Productionable	W50 × L60 mm ×2 pcs W110 × L60 mm × 1 pc	W50 × L60 mm ×2 pcs W50 × L100 mm ×2 pcs W110 × L100 mm × 1 pc
Combs (included)	8 samples × 2 connected /1 pc 18 samples /1 pc	8 samples × 2 connected /2 pcs 18 samples /2 pcs
Size of Teeth combs	Width 4 mm, Thickness 1 mm	
Electrophoresis voltage	High/Low Changeable (by the included compact-sized power supply), AC100V/1A (Need a step-down transformer)	
Size of Electrophoresis bath (W×D×H)	207 × 129 × 68 mm	247 × 129 × 68 mm
Configuration	Electrophoresis bath × 1 pc, Gel preparation bath × 1 pc, Compact-sized power supply × 1 pc, UV transmission gel tray Combs × 1 pc (see above for Qty)	

NEW

Constant  
temperature  
incubator-shaker  
OD Monitor

For cell culture  
related products

Shaker

Mixer  
Rotator  
Stirrer

Bead beater  
homogenizer  
Ultrasonic  
homogenizer

Aluminum  
block Bath  
Mini-size Bath

Water bath  
Shaking Water bath  
Immersion cooler

Hybridization  
Incubator  
Constant temperature  
Chambers

Centrifugal  
Concentrators  
Cold Trap

Freeze dryers

Submarine  
Electrophoresis apparatus  
Blotting device for  
hybridization

Constant-temperature  
water circulating  
system [Chiller]

Appendix