

NEW

# Cell shaker CS-LR

**Enables Stable operation under high humidity in CO<sub>2</sub> incubator, etc. with high waterproof performance. The low calorific value has uninfluential effect on inside temp.**

•CO<sub>2</sub> Incubators that can be inside this unit --> P.048-049



CS-LR with Shaking platform MT-3636



CS-LR with Two-tier shaking platform WR-2030

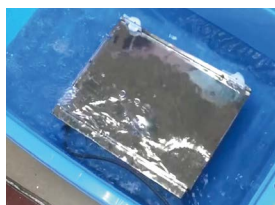


CS-LR with Universal shaking platform MT-2030

Model	CS-LR
Shaking motion	Switchable Reciprocal/Orbital shaking
Shaking speed	15 to 200 r/min
Shaking width	25 mm (can be changed to 20 mm) (*)
Platform dimensions	300 × 200 mm
Ambient temp./Humidity	0°C to +50°C/Up to 95%
Maximum load	Approx. 3 kg (Optional platforms and vessel holders are included)
Dimensions (W×D×H)	Main unit: 300 × 240 × 129 mm Controller: 125 × 30 × 70 mm
Weight	Main unit: Approx. 7 kg/Controller: Approx. 0.5 kg
Power supply	AC100V-240V/1A (AC Adapter)

(\*)Ask our/TAITEC distributor if you would like to change.

## High waterproof withstands submergence test



It has high waterproof performance that passed the submersion test for 30 minutes and running test for 5 minutes in the performance test is at development.

\*The test not guaranteed for use in water.

## Separated controller



Enables to control shaking speed etc. remotely without installation from the unit (Cable 2 m). Because of this, the operation part is not adversely affected in a harsh environment such as a low temperature incubator or high humidity in a CO<sub>2</sub> Incubator.

## Features

- Enables Stable operation under high humidity in CO<sub>2</sub> Incubator, etc. with high waterproof performance
- Standard platform with anti-bacterial processing
- Operation unit can be installed outside the cabinet (cable 2 m)

## Applications

- Shaking culture of Animal cells inside CO<sub>2</sub> incubator
- Shaking culture mildly of Stem cells such as iPS cells
- Shaking under high humidity environment such as Growth chambers

## Switchable Reciprocal/Orbital shaking according to the shape of vessels

The shaking motion can be switched between reciprocal shaking at low speed for Petri dishes and orbital shaking for Erlenmeyer flasks. It shakes accurately even at low speed.

As the speed of the shaking gradually rises from a low speed, it becomes effective on reducing stress on the samples.

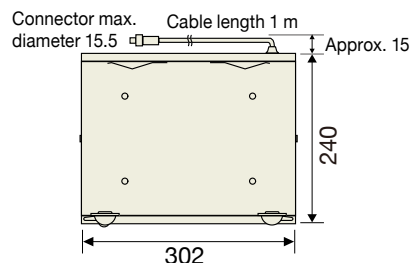
## Clean stainless steel exterior and antibacterially processed platform

The exterior is made of clean stainless steel. Plus the platform is processed with antibacterial processing with KENIFINE that drastically suppresses the growth of bacteria/alga/mold/virus when the culture medium is spilled or water droplets are adhered.

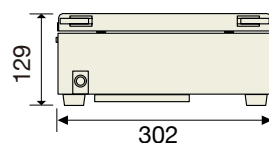
\*KENIFINE is made by Kobe Steel, Ltd. (Japanese corporation). Compared to conventional inorganic antimicrobial materials, this antimicrobial coating technology is not only antimicrobial, but also antifungal, antialgal, and antiviral, and has excellent durability.

## Dimensions

### [Plain]



### [Front]



\*Orbital dimensions of movable part (at shaking width of 25 mm): 328 × 257

\*Installation dimensions including cables: 328 × 276

\*For more detailed installation dimensions, see the right.

# Cell shaker CS-LR Optional accesories

**Optional accesories: Shaking platform** (for details, see below and P.069)

Product Name/Model	Example of Capacity
<b>Universal shaking platform MT-2030 (*1)</b>	100 mL Erlenmeyer flask × 12, 250 mL × 6, 300 mL × 6, 500 mL × 3
<b>Universal shaking platform for CS-LR MT-3636 (*1), (*2)</b>	100/200/250 mL Erlenmeyer flask × 18, 300/500 mL × 9, 1 L × 5
<b>Two-tier shaking platform WR-2030 (*3)</b>	6 cm dish × 24 50 mL TC flask × 12
<b>Large-size shaking platform WR-3636LR</b>	6 cm dish × 36 40 mL TC flask × 28
<b>Spring net shaking platform MR-2030</b>	50 mL disposable centrifuge tube × 24

(\*1)Clamps are available as an option. (\*2)MT-3636 is a specifically designed platform for CS-LR. Be sure to use below 160 r/min. (\*3)Sticky sheet ST-2030 (Optional) is required to prevent slipping. •Optional shaking platforms are not processed with antibacterially processing.

**Optional accesories: Clamps** (Mounted on the Universal shaking platform)

Model	CF-0100	CF-0250	CF-0300	CF-0500
Erlenmeyer flasks	100 mL	250 mL	300 mL	500 mL

**Optional accessory: Stand for CS-LR**

**Model CS-3024**  
The stand for CS-LR can be placed to straddle the Humidity Pan inside MG-71 series.

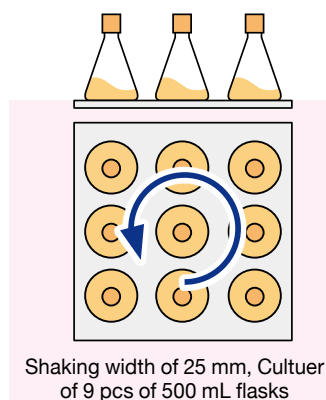
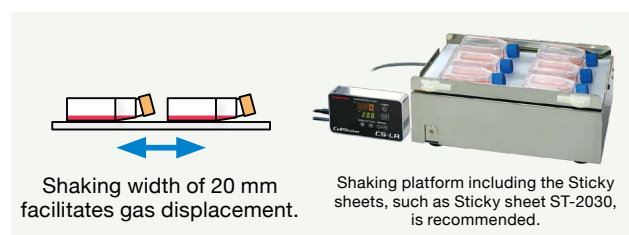
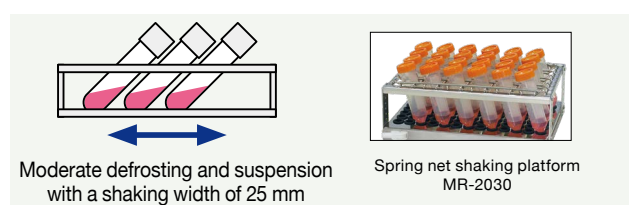
•It does not come with the Humidity Pan.



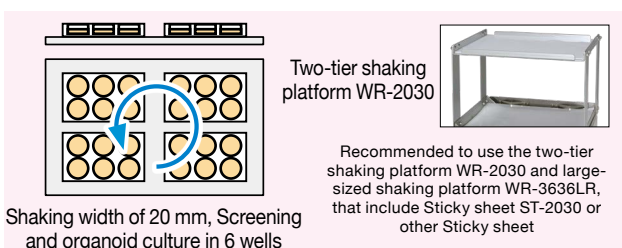
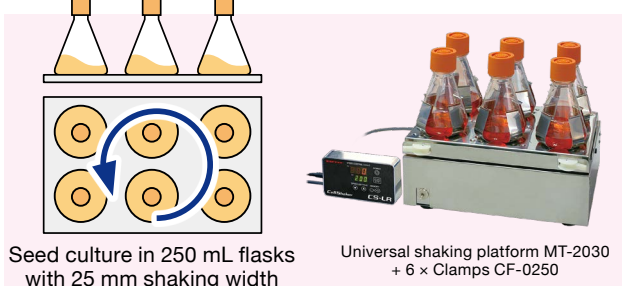
## CS-LR Reference Materials

**Reference for shaking motion, vessels, and shaking width**

**Reciprocation in test tubes or TC flasks, Shaking width according to the vessel**



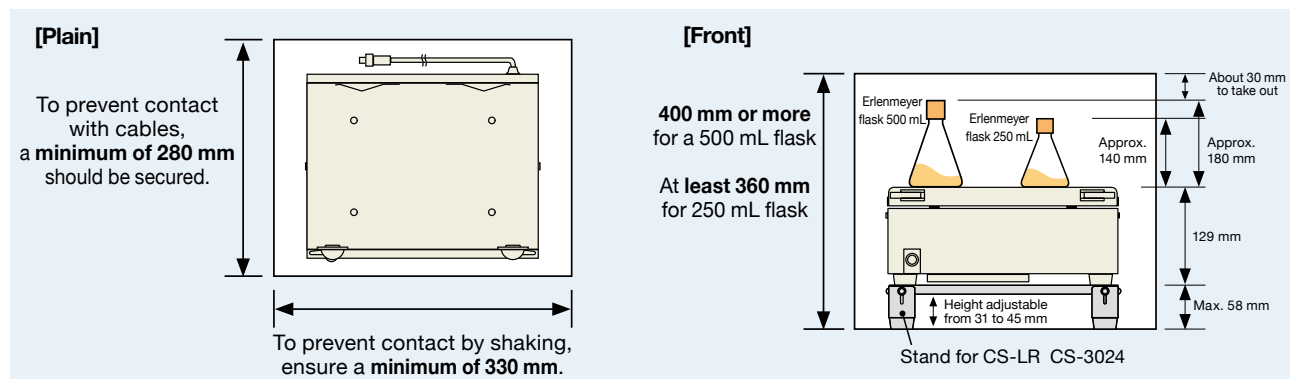
**Orbital shaking for flasks and well plates, Shaking width depending on the vessel**



CS-LR Claw Clamp Shaking Table MT-3636 + Claw Clamp CF-0500 × 9

Universal shaking platform dedicated for CS-LR, which is optimal for shaking a large number of Erlenmeyer flasks stably (Clamps are optional). Use it at 160 r/min or less. Shaking platform dimensions: 360 × 360 mm

**Reference material for placing in the incubator chamber**



NEW

Constant temperature incubator shaker  
OD Monitor

For cell culture related products

Shaker

Mixer Rotator Stirrer

Bead beater homogenizer Ultrasonic homogenizer

Aluminum block Bath Mini-size Bath

Water bath Shaking Water bath Immersion cooler

Hybridization Incubator Constant temperature Chambers

Centrifugal Concentrators Cold Trap

Freeze dryers

Submarine Electroporosis apparatus Blotting device for hybridization

Constant-temperature water circulating system [Chilled]

Appendix