

NEW

# Swing incubator SW-060

The swing incubator is free from CFC, has high accuracy and saves energy. It is a multi-purpose constant-temperature incubator with the temperature range from +15°C to +60°C.

•Optional accessories and options --> P.151 to 152 •Electrophoresis and Blotting device --> P.186 to 189



TAITEC's New Brand  
[NEXT]



Example of using the seesaw kit  
(sold separately)

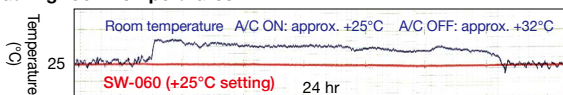
Please prepare an electrical adapter compatible with your country for use.

## CFC-free high-accuracy constant-temperature Peltier incubator

This machine is a multi-purpose constant-temperature incubator with a shaking mechanism built in a constant-temperature chamber that incorporates a high-accuracy temperature distribution mechanism. It is capable of heating and cooling from +15°C to +60°C using a Peltier element. It can be used in various types of incubation and culture, defrosting of samples, etc.

\* HB-80N (up to +80°C) and 100N (up to +100°C), shown on the right-hand page, are available for higher-temperature applications.

### ■ Stability of internal temperature of SW-060 (+25°C setting) under fluctuating room temperatures



## Simple operation panel, easy operation



Simple and easy-to-understand operation panel. Just press the Up/Down buttons to set the temperature and shaking speed, and the machine is ready for use. The shaking platform can be easily set/changed (see the right page).

Model	SW-060
Temperature range (°)	+15°C to +60°C (RT-10°C to RT+35°C)
Temp. control accuracy (°)	±0.1°C to 0.2°C
Shaking motion	Seesaw, Reciprocal, and Rotation (Bottle rotation and Inversion stirring of Microtubes) by changing to the Optional Shaking Kit
Shaking speed	5 to 60 r/min
Platform effective dim.	260 x 230 mm
Temp./Speed display	Digital
Heating/Cooling method	Peltier element: 300 W
Circulating method inside the chamber	Flow-type
Safe devices/protections	Fuse, High temperature, Overvoltage protection, Temperature abnormality diagnosis, Braking when hood is open, Motor overload/overload protection, Temp. controller self-diagnosis function, Sensor error display
Dimensions (WxDxH)	425 x 465 x 445 mm
Weight	Approx. 32 kg
Power supply	AC 100 to 240 V
Standard accessories	Power cable x 1 pc, fuse x 1 pc, Stackable bracket x 1 pc

(°) Values for when the ambient temperature is around +25°C.

We contribute to the development of research and industry.

**TAITEC** [General Catalog]

## Features

- CFC Free by Electronic heating and cooling with Peltier element
- Excellent Storage temp. stability, Energy saving, and Low vibration
- Four stirring methods for vessels with the easily replaceable platform

## Applications

- Various Hybridizations
- Thawing at room temp. of samples and reagents
- Stain and destain of gel, enzyme reaction



### TAITEC VOICE

Low vibration because no refrigerator is used.  
It can be used for constant temperature thawing of delicate solvents.

## Stackable up to Three levels (Common in SW/HB series)

Up to three units of the SW/HB series can be stacked during use to strongly support space savings in laboratories. This makes it possible for more than one person to use the devices simultaneously by replacing the kit or to process a large number of samples in a limited space by using a bottle kit.

Stacking example: Even when three units are stacked, their height is around 135 cm.



Refer to P.151 to 152 for the optional accessories and options