

Prescyto MG-71C/71M

Multi-gas incubator equipped with a new "Low oxygen booster" function that makes Hypoxia conditions return quickly after the door opens and closes (4-times faster than the conventional one. *Patent pending).

•Shaker for High humidity "CS-LR" that can be inside the Chamber --> P.066 •Optional accessories and Related products --> P.050-052



MG-71M

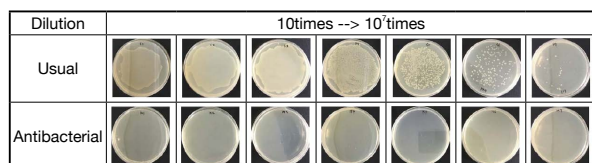
Features

- Low oxygen booster makes Hypoxia conditions return quickly (71M)
- Oxygen sensor simple checking function (71M)
- Equipped with Connection holes to the Chamber
- Switches Gas cylinders automatically with the Optional "MG-GCH02"
- Stackable up to 2 levels

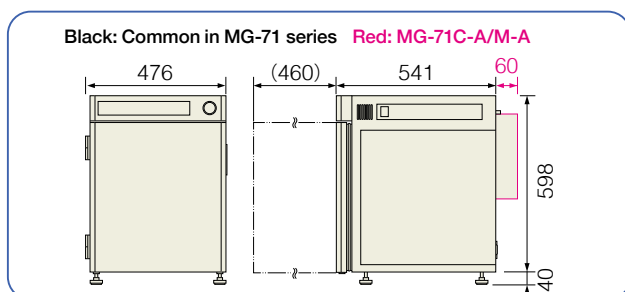
Applications

- Hypoxic culture of Stem cells and Tumor cells (71M)
- Cultivation of Obligatory anaerobe (71M)
- Cultivation of Adherent cells such as mammals

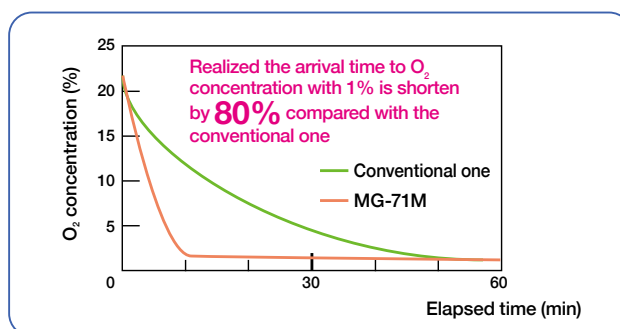
Antibacterial test results on the shelf



External dimensions



The arrival time to O₂ concentration with 1% by Low oxygen booster



Multi-gas incubator equipped with a new "Low oxygen booster (MG-71M) function" makes Hypoxia conditions return quickly after increasing oxygen concentration by opening and closing the door. Realized the arrival time to O₂ concentration with 1% is shorten by 80% compared with the conventional one.

Product name	CO ₂ incubator	Multi-gas incubator
Model	MG-71C	MG-71M
Temperature range/accuracy	5°C above RT to 50°C, ±0.2°C (*1)	
Heating method	Air Jacket type (6 Heaters)	
Gas control range	CO ₂ : Atmospheric concentration to 20% (Set in 0.1%) (*2)	CO ₂ : Atmospheric concentration to 20% (Set in 0.1%) (*2) O ₂ : 1% to 20% (Set in 0.1%) (*3)
Ambient temp. range	+15°C to +35°C	
Humidification method	Natural evaporation by the Humidity pan	
Inner Dimensions(WxDxH)/ Chamber volume	Chamber: 354 × 425 × 418 mm, Approx. 53 L	
Example of Capacity	Per shelf: Petri Dish φ35 mm ×49 , Well plate ×6 , 14 × 25 cm ² of TC flask	
Other functions	Connection holes (inner dia. φ30 mm) × 2 pcs, Outlet for external supply (Max. 3 A), RS-232C terminal, Low oxygen booster (71M), Oxygen sensor simple checking function (71M)	
Gas connection port	Barbed nozzle φ9 mm (Replaceable: 1/4Rc)	
Dimensions(WxDxH)/Weight	476 × 578 × 638 mm, Approx. 51 kg	
Standard accessories	Shelf (Antibacterial treatment × 3 pcs(*4), Shelf support × 6 pcs, Humidity pan × 1 pc, Gas supply tube (5 m) × 1 pc, Hose band × 2 pcs	Shelf (Antibacterial treatment) × 3 pcs(*4), Shelf support × 6 pcs, Humidity pan × 1 pc, Gas supply tube (10 m) × 1 pc, Hose band × 4 pcs
Power supply	AC100V/3.5A/Max.6.5A (Need a step-down transformer)	

(*1)The value at the ambient temperature 25°C and operation temperature 37°C/CO₂ 5%. (*2)Measured by Infrared type CO₂ sensor. (*3)Measured by Zirconia type oxygen sensor.

(*4)Up to Six shelves can be stored.

•"Multi-gas" is a specification that controls CO₂ and O₂ Concentration by connecting CO₂ Gas and N₂ Gas or O₂ Gas.

We contribute to the development of research and industry.

TATEC [General Catalog]

NEW

Constant temperature incubator/shaker OD Monitor

For cell culture related products

Shaker

Mixer Rotator Stirrer

Bead beater Ultrasonic homogenizer

Aluminum block Bath Mini-size Bath

Water bath Shaking Water bath Immersion cooler

Hybridization Incubator Consistent temperature Chambers

Centrifugal Concentrators Cold Trap

Freeze dryers

Substrate Electroporation Blotting device for hybridization

Constant-temperature water circulating system [Chiller]

Appendix