

NEW

Reciprocal shaker SR-1D

Compatible with Test tubes and Erlenmeyer flasks. Shakes strongly with 50 mm shaking width. It is equipped with 3 kinds of timer functions.

•Compatible in Shaking platform "Shaker for Elution testing TS-10N" --> P.085

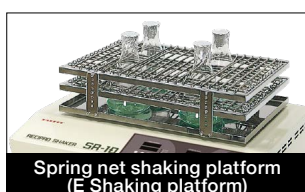
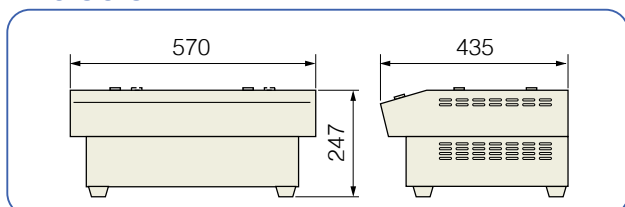


SR-1D with Test tube rack shaking platform (Optional)

Model	SR-1D
Shaking motion	Reciprocal shaking
Shaking speed	50 to 250 r/min (*)
Amplitude	50 mm
Maximum load	Approx. 7 kg (Shaking platform is included)
Timer	Timer function (setting/display: 1 min to 99 h 59 min) •ON-END •OFF-ON •OFF-ON-END Integral timer (when the timer function is not being used) 0 to 99 h 59 min or after: 100 h to 9999 h
Speed display	Digital
Safety devices/functions	Motor protection circuit at overload, Fuse
Dimensions (W×D×H)	570 × 435 × 247 mm
Weight	Approx. 45 kg
Power supply	AC100V-240V/1.5A (universal power supply)
Standard accessories	Fuse × 1 pc

(*)Make the shaking speed below 160 r/min when using the Spring net shaking platform (E Shaking platform).

Dimensions



Spring net shaking platform (E Shaking platform)

Various shaped vessels can be placed thanks to the spring net. (There is a speed limitation for using it)

Model	Remarks
E Shaking platform for SR-1 (*)	460 × 300 × 120H mm, about 2.7 kg

(*)Be sure to use below 160 r/min.

We contribute to the development of research and industry.
TATEC [General Catalog]

Features

- Dedicated for Reciprocal shaking, 50 mm shaking width
- Shaking platform (option) 4 types, Capacity: 1 L Erlenmeyer flask × 6 pcs
- Equipped with 3 kinds of timer functions and an integral timer
- Speed signal transmission output (4 to 20 mA) is available as an option

Applications

- Preparation of reagents and samples for analysis
- Shaking culture of Microorganisms inside the constant temp. room
- Various mixing-stirring, etc.

Optional Shaking platform (4 types in total)

Shaking platform is not included. Please purchase one of the following together.



Test tube rack shaking platform (A Shaking platform)

2 sets of commercial test stand for 50 test tubes with $\phi 18$ mm stoppers can be fixed by laying them horizontally.



Test tube shaking platform (C Shaking platform)

Up to 24 pcs of Stopped test tube and Centrifuge tubes of $\phi 10$ to 35 mm × 100 to 120 mm (length) can be mounted.

Model	Remarks
A Shaking platform for SR-1	470 (W *inside) × 300 (D) × 100 (H) mm, Approx. 2.8 kg
C Shaking platform for SR-1	680 × 339 mm, Approx. 4.8 kg



Flask shaking platform (B Shaking platform)

Capacity: 1 L × 6 pcs (Standard). The vessel size and capacity can be changed by adding the press bars.



Vessel press bar (long/Short) for B Shaking platform

Capacity of Erlenmeyer flasks for B shaking platform, Additional number of Press bars

Volume	Capacity	Additional number of Press bars
50 mL	40 pcs (long 6, short 10)	300 mL 15 pcs (long 2, short 4)
100 mL	24 pcs (long 4, short 6)	500 mL 8 pcs (short 2)
200 mL	15 pcs (long 2, short 4)	1 L 6 pcs (unnecessary)

Product name/Model	Remarks
B Shaking platform for SR-1	Vessel press bars (long 6 pcs/short 4 pcs) included (*), 470 (W *inside) × 300 (D) × 100 (H) mm, Approx. 2.8 kg
Vessel press bar (long) for SR-1	For B Shaking platform additionally. $\phi 6$ mm × 505 mm
Vessel press bar (short) for SR-1	B Shaking platform additionally. $\phi 6$ mm × 335 mm

(*)Additional Vessel press bars may be required due to the capacity. See the above for details.