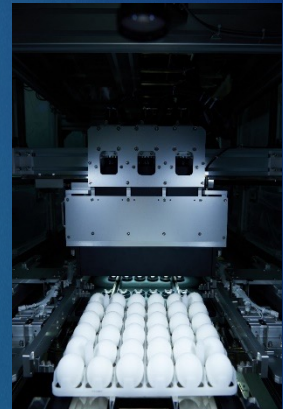


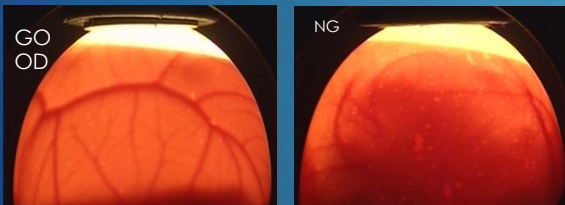
EGG INSPECTOR VAS-153

The machine checks growth progress of fertilized eggs which incubate influenza viruses and removes the eggs not suitable for vaccine production. It contributes to labor saving by improving inspection accuracy and processing speed drastically!!



<http://www.yonkei.co.jp>
Shikoku Electric power Group
SHIKOKU INSTRUMENTATION CO.,LTD.

Specifications:
Body size: L5,200×W1,400×H2,340(mm)
Weight: approx.1,500Kg
Main material·Component:SUS304,Welding flames structure
Power supply: three-phase 5-wire type AC380V 50Hz/10kVA
Air supply: 2 systems: 0.5Mpa90L/min or over×2



- It removes the underdeveloped eggs by capturing the inside of fertilized eggs by CCD cameras.
- Available to inspect up to 32,000 eggs per hour.
- It captures the eggs from four directions by 18 cameras, inspecting a tray of 6x6 on 6 stages.
- Comply with formaldehyde removing agent.